



Mine [Spec] MSLED280K-9

Perkins 2 cylinder engine

Extra low voltage (DC)

10 x 300W low glare RComSafe lamps
producing 280,000 lumens

Refuel every 2 weeks

13t annual carbon footprint reduction

50,000hrs of life per light



ALLIGHTSYKES

THE SCIENCE OF LED LIGHTING

IN TODAY'S LED LIGHTING TOWER GAME THERE ARE THREE KINDS OF PLAYERS.

Those who make things happen, those who watch things happen, and those who wonder what happened.

WE KNOW WHERE WE STAND:

- No loss of light output after stabilisation.
Each LED flood light provides 28,000 effective lumens after stabilisation (IES standard - LM 79-08). Photometric Light Plots based on NATA approved testing parameters confidently state that the light output will match field testing.
- New Perkins 2cyl water-cooled engine
- Extra low voltage (DC). OH&S risk elimination
- Stabilised power consumption of the LED is 300W nominal
- 10 x 300W low glare RFComSafe lamps producing 280,000 lumens
- Refuel every 2 weeks
– on basis of 12hr operation each night
- 13t annual carbon footprint reduction per tower compared with metal halide equivalent
- Total Control System (easy start/stop, location tracking and performance monitoring via notepad or smartphone(option))
- Complete plug and play system with no hard wired componentry makes for easy part and loom servicing or replacement
- 50,000hrs of life per light
- 500hr service intervals
- Light Instant-on (no warm-up/cool down)
- Made in Australia

MSLED280K-9 STANDARD EQUIPMENT

Height	2600mm (8' 5")
Length	5200mm (17' 1")
Width	2100mm (6' 9")
Weight (Wet)	1830kg (4034lb)
Fuel	Diesel
Fuel Capacity	220L (58 US Gallons)
Fuel Tank	Plastic
Fuel Consumption	1.05L/hr (0.27 US Gallons)
Runtime @ 100% Load	209hrs
Engine	Perkins 402D-05G
No. Engine Cylinders	2
Engine Aspiration	Naturally aspirated
Alternator	Single bearing, brushless
Power Generation	Extra Low Voltage DC
Electrical System	48
Number of Lights	10
Type of Lights	300W LED
Total Light Output	280,000 Lumens
Light Tilt	Hydraulic
Mast Rotation	Manual
Mast Raise/Extension	9m (29' 6") Hydraulic
Trailer	Single Axle
Tire and Rim Size	205 R16
Stabiliser Supports	4 x wind down
Tow Hitch	50mm ball (1.9") 2000kg (4409lb)
Also Includes	Battery Isolation, Emergency Stop, Timer Shutdown, LED Work Light, In line Water/Fuel Filter

OPTIONS

Hydraulic Light Bar Rotation	Wheel Chocks
Hydraulic Post Rotation	Heavy Duty Drag Skid
Hydraulic Stabiliser Legs	Twin Axle Trailer
CAT Jumpstart	Coal Mining Wiring Specs
Wiggins Fast Fill	Fire Extinguisher

LAMPS
POWERED
BY HELLA

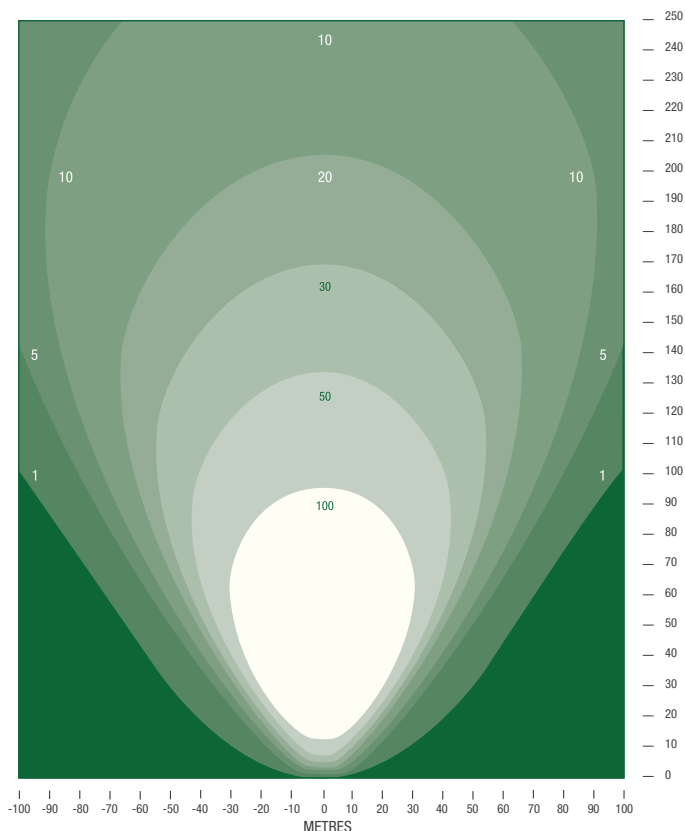
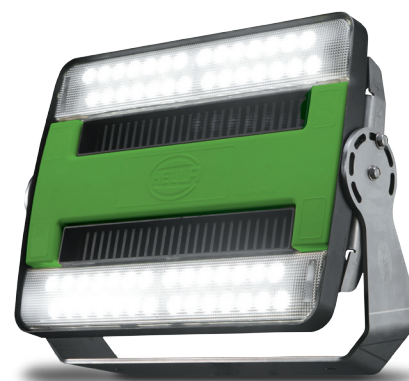


Photo is for illustration purpose and includes non-standard items.
Final weight and dimensions will depend on completed specifications.
All this information in this document is substantially correct at the time of printing and may be altered subsequently.

REV 141216

ALLIGHTSYKES

www.allightsykes.com